

RESEARCH

Open Access



# Feasibility and accuracy of noninvasive continuous hemoglobin monitoring using transesophageal photoplethysmography in porcine model

Ling Peng<sup>1</sup>, Long Zhao<sup>2</sup>, Xue Zhang<sup>1</sup>, Yi Zhang<sup>1</sup>, Meng Ding<sup>1</sup>, Zhibin Lin<sup>3</sup>, Hao Jiang<sup>3</sup>, Yuchen Huang<sup>3</sup>, Bo Gao<sup>3</sup> and Wei Wei<sup>1\*</sup>

## Abstract

**Background** Continuous and noninvasive hemoglobin (Hb) monitoring during surgery is essential for anesthesiologists to make transfusions decisions. The aim of this study was to investigate the feasibility and accuracy of noninvasive and continuous Hb monitoring using transesophageal descending aortic photoplethysmography (dPPG) in porcine model.

**Methods** Nineteen landrace pigs, aged 3 to 5 months and weighing 30 to 50 kg, were enrolled in this study. A homemade oximetry sensor, including red (660 nm) and infrared (940 nm) lights, was placed in the esophagus for dPPG signal detection to pair with the corresponding reference Hb values ( $Hb_{i-STAT}$ ) measured by blood gas analysis. The decrease and increase changes in Hb concentration were achieved by hemodilution and transfusion. Metrics, including alternating current (AC), direct current (DC), and AC/DC for both red and infrared light were extracted from the dPPG signal. A receiver operating characteristic (ROC) curve was built to evaluate the performance of dPPG metrics in predicting the Hb "trigger threshold" of transfusion ( $Hb < 60$  g/L and  $Hb > 100$  g/L). Agreement and trending ability between Hb measured by dPPG ( $Hb_{dPPG}$ ) and by blood gas analysis were analyzed by Bland-Altman method and polar plot graph. Error grid analysis was also performed to evaluate clinical significance of  $Hb_{dPPG}$  measurement.

**Results** The dPPG signal was successfully detected in all of the enrolled experimental pigs, without the occurrence of a continuous loss of dPPG signal for 2 min during the entire measurement. A total of 376 pairs of dPPG signal and  $Hb_{i-STAT}$  were acquired.  $AC_{red}/DC_{red}$  and  $AC_{inf}/DC_{inf}$  had moderate correlations with  $Hb_{i-STAT}$ , and the correlation coefficients were 0.790 and 0.782, respectively. The areas under the ROC curve for  $AC_{red}/DC_{red}$  and  $AC_{inf}/DC_{inf}$  in predicting  $Hb_{i-STAT} < 60$  g/L were 0.85 and 0.75, in predicting  $Hb_{i-STAT} > 100$  g/L were 0.90 and 0.83, respectively. Bland-Altman analysis and polar plot showed a small bias (1.69 g/L) but a wide limit of agreement (-26.02–29.40 g/L) and a poor trend ability between  $Hb_{dPPG}$  and  $Hb_{i-STAT}$ . Clinical significance analysis showed that 82% of the data lay within the Zone A, 18% within the Zone B, and 0% within the Zone C.

\*Correspondence:  
Wei Wei  
weiw@scu.edu.cn

Full list of author information is available at the end of the article



© The Author(s) 2024. **Open Access** This article is licensed under a Creative Commons Attribution 4.0 International License, which permits use, sharing, adaptation, distribution and reproduction in any medium or format, as long as you give appropriate credit to the original author(s) and the source, provide a link to the Creative Commons licence, and indicate if changes were made. The images or other third party material in this article are included in the article's Creative Commons licence, unless indicated otherwise in a credit line to the material. If material is not included in the article's Creative Commons licence and your intended use is not permitted by statutory regulation or exceeds the permitted use, you will need to obtain permission directly from the copyright holder. To view a copy of this licence, visit <http://creativecommons.org/licenses/by/4.0/>. The Creative Commons Public Domain Dedication waiver (<http://creativecommons.org/publicdomain/zero/1.0/>) applies to the data made available in this article, unless otherwise stated in a credit line to the data.

**Conclusion** It is feasible to establish a noninvasive and continuous Hb monitoring by transesophageal dPPG signal. The  $AC_{red}/DC_{red}$  extracted from the dPPG signal could provide a sensitive prediction of the Hb threshold for transfusion. The Hb concentration measured by dPPG signal has a moderate correlation with that measured by blood gas analysis. This animal study may provide an experimental basis for the development of bedside  $Hb_{dPPG}$  monitoring in the future.

**Keywords** Photoplethysmography, Hemoglobin, Descending aorta, Near-infrared spectroscopy, Monitoring

## Background

Reliable and continuous noninvasive hemoglobin (Hb) monitoring is essential for anesthesiologists to make transfusions decisions and avoid unnecessary or delayed transfusions. Although several devices, such as satellite CO-Oximeters or point-of-care hemoglobinometers, can provide bedside Hb measurements, they are still invasive, time-consuming, and allow only intermittent monitoring [1–3]. Pulse CO-Oximetry (SpHb) (Masimo Corp., Irvine, CA, USA), based on near-infrared spectroscopy (NIRS) technology to detect microvascular light absorption of fingers, is currently available in providing non-invasive and continuous Hb monitoring in clinical scenarios [1, 4]. However, the light absorption signal derived from the arteriolar bed of peripheral tissues is strongly influenced by poor perfusion, such as hypothermia, hypovolemia, and vasoconstriction. Therefore, the signal source may be the main cause limiting the application of SpHb monitoring in severe bleeding, critically ill or shock patients [5, 6]. Previous studies have shown that light absorption signal from central large vessels, even from the ventricle, can be detected by placing sensors in the esophagus or trachea [7–9]. And the light absorption signal from central large vessel is more stable than that from peripheral microcirculation in critical patients [10]. When the light absorption signal is electronically amplified and recorded as a voltage signal, it is called photoplethysmography (PPG). The PPG signal contains an alternating current (AC) component caused by pulsatile arterial blood and a direct current (DC) component induced by non-pulsatile arterial blood and venous blood. Our previous study found that the esophagus provides an optimal window for detecting central PPG signals due to the relatively long contiguous relationship between the esophagus and the descending aorta [11, 12]. Transesophageal PPG signal from the descending aorta (dPPG) can be easily detected at an esophageal depth of  $34.3 \pm 1.4$  cm at an orientation of 3 o'clock [11]. Therefore, PPG signal from the descending aorta merits further investigation as a potential alternative signal source for intraoperative continuous Hb monitoring. This pilot study was designed to test the feasibility and accuracy of noninvasive and continuous Hb monitoring using transesophageal dPPG signal in porcine model.

## Materials and methods

All the protocols were reviewed and approved by the Animal Ethics Committee of West China Hospital of Sichuan University (No. 2,019,056 A, Chengdu, China) and complied with the Animal Research Reporting In vivo Experiments (ARRIVE) guidelines.

### Transesophageal PPG sensor

A single-used oximetry sensor (Nellcor Puritan Bennett Inc., Pleasanton, CA, USA) was modified as a reflectance oximeter by shortening the distance between the emitters and photodetectors to 10 mm. The emitters contained 660 nm red light and 940 nm infrared light. The self-made sensor was fixed to a flexible string using a monolayer adhesive dressing (3 M, Shanghai, China) and black electrical tape (Fig. 1).

### Anesthesia

Landrace pigs aged 3–5 months and weighing 30–50 kg were anesthetized. After intramuscular injection of 3–5 mg/kg Zoletil 50 (tiletamine-zolazepam, Virbac, Carros cedex, France), a 14-gauge catheter was placed into the auricular vein. General anesthesia was induced with midazolam (0.04–0.08 mg/kg), sufentanyl (1–2  $\mu$ g/kg), vecuronium (0.6–1 mg/kg) and maintained with sevoflurane inhalation (2–3%) and intermittent infusion of sufentanyl and vecuronium. After tracheal intubation, animals were mechanically ventilated with 100% fraction of inspired oxygen ( $FiO_2$ ). Mechanical ventilation parameters were necessarily adjusted to maintain the end-tidal carbon dioxide ( $EtCO_2$ ) in the normal range (35–45 mmHg). A 4 F catheter (PV2014L 16-A, Pulsion Pacific, Brisbane) was inserted into the femoral artery for continuous blood pressure monitoring, blood sampling for frequent Hb concentration measurement ( $Hb_{i-STAT}$ ) (i-STAT300, Attott Point of Care, Inc., Princeton, NJ, USA), and continuous cardiac output monitoring (PiCCO) (Pulsion Medical system SE, Feldkirchen, Germany). An 8.5 F, 3-lumen catheter (Yixinda, Shenzhen, China) was introduced into the internal jugular vein for central venous pressure (CVP) monitoring, removal of blood to induce hemodilution, and transfusion. The modified oximetry sensor was inserted into the esophagus and connected to a customized PPG acquisition and processing system (APS) [12]. Animals were kept on a warming pad to maintain nasopharyngeal temperature



**Fig. 1** The modified transesophageal oximetry sensor. 1 detector of the oximetry sensor, 2 emitter of the oximetry sensor

at 36 to 38 °C. Tail pulse oxygen saturation ( $\text{SpO}_2$ ), electrocardiogram (ECG), and nasopharyngeal temperature were continuously monitored.

#### Acquisition of PPG signal, Hb measurement, and vital sign

The PPG waveform from the descending aorta has a slight dichrotic notch, which is completely different from the PPG signal from the aortic arch or left ventricle [11, 12]. Thus, the dPPG signal can be easily identified based on waveform characteristics. According to the PPG waveform displayed on the APS, the oximetry sensor was adjusted until a characteristic dPPG signal could be detected. The dPPG signals were separated into two channels (red and infrared) by a demultiplexer. The depth and orientation of the oximetry sensor in the esophagus were then fixed. If the dPPG waveform was unstable during the measurement, the sensor was slightly adjusted until the characteristic dPPG signal was displayed again on the APS. The dPPG signal was continuously recorded (16-bits resolution, 500-Hz sampling frequency) by the APS system and saved as a 'txt' file in a personal computer (hp pavilion dv2500). When the dPPG signal and hemodynamics were stable, a total of approximately 400–800 ml of blood was slowly withdrawn through the internal jugular vein catheter. Simultaneously, aliquots of crystalloid or colloidal solution were administered for hemodilution. The initially removed blood was stored in a disposable blood storage bag (Jie Rui, Shandong, China) containing sodium citrate. The  $\text{Hb}_{i\text{-STAT}}$  was measured after each 50 ml of blood removal and administration of aliquots of crystal or colloidal solution. Simultaneously, the corresponding 2-minute dPPG signal was collected and saved to pair the  $\text{Hb}_{i\text{-STAT}}$  measurement. The blood gas analysis device was calibrated according to manufacturer's specifications before each experiment. The process of hemodilution was stopped when the  $\text{Hb}_{i\text{-STAT}}$  was  $<60$  g/L. The initially removed blood was then reinfused to increase the Hb concentration.  $\text{Hb}_{i\text{-STAT}}$  and the paired

2-minute dPPG signal were obtained after each 50 ml blood transfusion. BP, HR,  $\text{SpO}_2$  were recorded during the process of hemodilution and transfusion.

The saved dPPG signals, including red and infrared, were redisplayed as waveforms by a virtual instrument implemented in Matlab (R2007b; MathWorks, Inc., Natick, MA, USA) on the personal computer. Artifacts induced by the respiratory motion and esophageal peristalsis were removed by a filter (FIR, bandpass, 20th order). Metrics including AC component of red ( $\text{AC}_{\text{red}}$ ) and infrared ( $\text{AC}_{\text{inf}}$ ) light, DC component of red ( $\text{DC}_{\text{red}}$ ) and infrared ( $\text{DC}_{\text{inf}}$ ) light,  $\text{AC}_{\text{red}}/\text{DC}_{\text{red}}$ , and  $\text{AC}_{\text{inf}}/\text{DC}_{\text{inf}}$  were extracted from dPPG [12]. All metrics were averaged from nine stable continuous waveforms in each 2-min segment of the dPPG signal. After the experiment, the animals were killed by injecting 10% potassium chloride.

#### Statistical analysis and sample size

Continuous variables were tested for normal distribution using the Kolmogorov-Smirnov test and are presented as mean, standard deviation (SD), minimum and maximum. Pearson correlation coefficients were used to analyze correlations between the  $\text{Hb}_{i\text{-STAT}}$  and dPPG metrics. Linear regression analysis was performed to construct a model for Hb measurement by dPPG metrics ( $\text{Hb}_{\text{dPPG}}$ ). A receiver operating characteristic (ROC) curve was built to evaluate the performance of dPPG metrics in predicting the Hb "trigger threshold" for transfusion ( $\text{Hb} < 60$  g/L and  $\text{Hb} > 100$  g/L). The agreement between  $\text{Hb}_{\text{dPPG}}$  and  $\text{Hb}_{i\text{-STAT}}$  was demonstrated by a repeatedly measured Bland-Altman graph. Trending ability of  $\text{Hb}_{\text{dPPG}}$  to follow  $\text{Hb}_{i\text{-STAT}}$  changes was described by the polar plot. Paired Hb measured by dPPG and blood gas analysis was also plotted using the three zones Hb error grid analysis by Morey and colleagues, which takes into account the clinical significance of the difference [13]. Statistical analysis was performed using SPSS version 17.0 (SPSS, Inc.,

Chicago, IL, USA), SigmaPlot 12.0 (Systat Software, Inc., San José, CA, USA) and Matlab (R2007b; MathWorks, Inc., Natick, MA, USA). A P value of <0.05 was considered statistically significant.

According to the standard error of the 95% limit of agreement (95% CI) is approximately  $\sqrt{3s^2/n-1}$ , where s is the SD of the differences between measurements by the two methods and n is the sample size. Expecting a SD of the differences between measurements by two methods of 20 g/L, a sample size of 300 measurements gives a 95% CI of about 0.22 s. Considering that at least sixteen paired measurements were performed per pig, nineteen pigs should be included.

## Result

### Demographics

The dPPG signal was successfully detected in all of the enrolled experimental pigs. No continuous 2-minute loss of dPPG signal occurred throughout the hemodilution and transfusion process. A total of 376 pairs of Hb<sub>i-STAT</sub> and corresponding characteristic dPPG signal were obtained from nineteen pigs (33.0±3.5 kg). The values of dPPG metrics and hemodynamic parameters during the measurements are listed in Table 1. The average decrease of Hb<sub>i-STAT</sub> during the hemodilution procedure was 28.29±10.69 g/L, and the average increase of Hb<sub>i-STAT</sub> during transfusion was 23.38±13.94 g/L. No esophagus bleeding was observed in any of the experiment animals after removal of the dPPG sensor.

### Assessment of correlation

The dPPG metrics including AC<sub>red</sub>, DC<sub>red</sub>, and DC<sub>inf</sub> had mild correlations with Hb<sub>i-STAT</sub>, with correlation

coefficients of 0.102 ( $p=0.047$ ), -0.221 ( $p<0.001$ ), and -0.243 ( $p<0.001$ ), respectively. AC<sub>red</sub>/DC<sub>red</sub> ( $r=0.790$ ,  $p<0.001$ ) and AC<sub>inf</sub>/DC<sub>inf</sub> ( $r=0.782$ ,  $p<0.001$ ) exhibited moderate correlations with Hb<sub>i-STAT</sub>. No significant correlation was found between AC<sub>inf</sub> and Hb<sub>i-STAT</sub> ( $r=0.064$ ,  $p=0.218$ ). ROC curve analysis identified an AC<sub>red</sub>/DC<sub>red</sub> value of 2.37% and an AC<sub>inf</sub>/DC<sub>inf</sub> value of 2.06% as the best cut-off point in predicting Hb<sub>i-STAT</sub> < 60 g/L (Fig. 2A). The areas under the ROC curve (AUC) of AC<sub>red</sub>/DC<sub>red</sub> and AC<sub>inf</sub>/DC<sub>inf</sub> were 0.85 (95% CI 0.79–0.89) and 0.75 (95% CI 0.62–0.88), respectively. The AUC of AC<sub>red</sub>/DC<sub>red</sub> and AC<sub>inf</sub>/DC<sub>inf</sub> in predicting Hb<sub>i-STAT</sub> > 100 g/L were 0.90 (95% CI 0.85–0.94) and 0.83 (95% CI 0.79–0.88), respectively, with cut-off values of 3.89% and 4.36% (Fig. 2B).

### Assessment of accuracy

In the case of intercorrelation, the dPPG metrics including AC<sub>red</sub>/DC<sub>red</sub> and AC<sub>inf</sub>/DC<sub>inf</sub> were incorporated into a stepwise multi-linear regression analysis to construct a mathematical model of Hb<sub>dPPG</sub>:

$$Hb_{dPPG} = 341.84 \times AC_{red}/DC_{red} + 569.61 \times AC_{inf}/DC_{inf} + 49.87.$$

The correlation coefficient between Hb<sub>dPPG</sub> and Hb<sub>i-STAT</sub> was 0.81 ( $p<0.001$ ). A Bland-Altman analysis is shown in Fig. 3. The bias (precision) between Hb<sub>dPPG</sub> and Hb<sub>i-STAT</sub> was 1.69 g/L (14.13 g/L), and the limit of agreement (LOA) was -26.02–29.40 g/L with a percentage error of 33%. In the trending analysis, the polar plot exhibited that the concordance rate between Hb<sub>dPPG</sub> and Hb<sub>i-STAT</sub> was 65% (Fig. 4). Clinical significance analysis of the 376 discrete points is presented in Fig. 5. 82% (307/376) of the data lay within the Zone A, 18% (69/376) within the Zone B and 0% (0/376) within the Zone C.

## Discussion

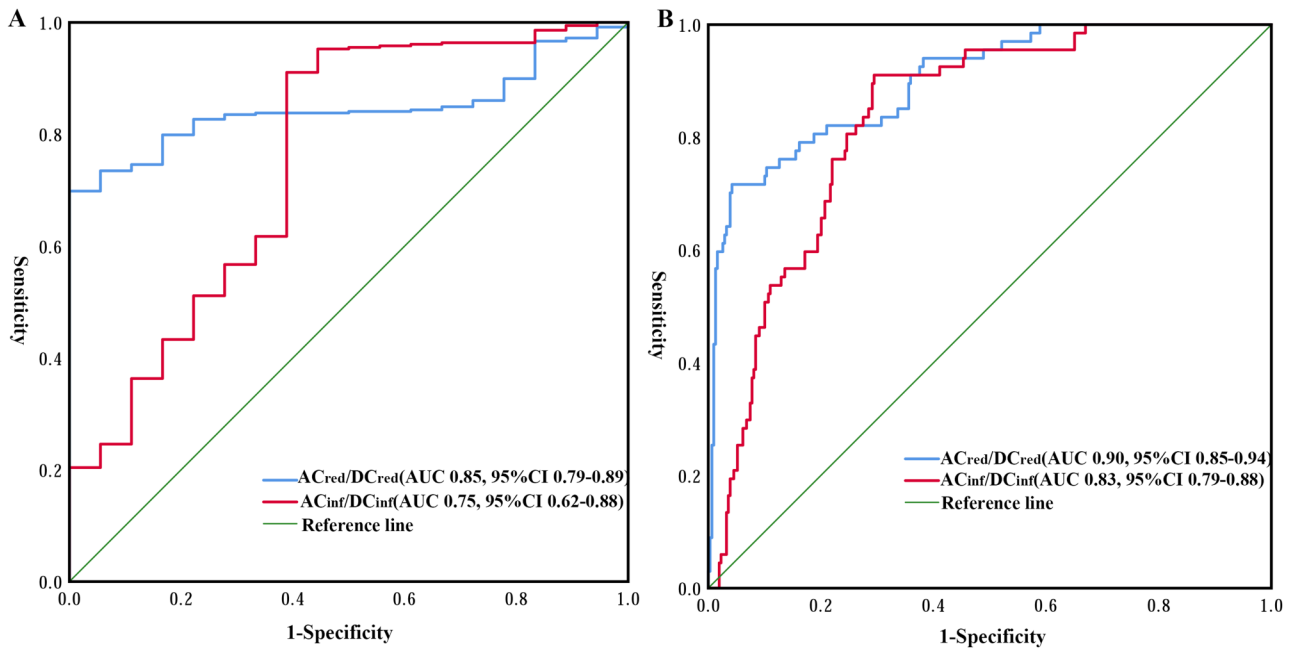
In this pilot study, we demonstrated the feasibility of noninvasive and continuous hemoglobin monitoring by transesophageal dPPG signal in porcine hemodilution and transfusion model. The dPPG metrics, including AC<sub>red</sub>/DC<sub>red</sub> and AC<sub>inf</sub>/DC<sub>inf</sub> had significant correlations with Hb<sub>i-STAT</sub>, and AC<sub>red</sub>/DC<sub>red</sub> enabled a sensitive prediction of Hb<sub>i-STAT</sub> < 60 g/L and Hb<sub>i-STAT</sub> > 100 g/L. In addition, we found that Hb<sub>dPPG</sub> was moderately correlated with Hb<sub>i-STAT</sub>.

The SpHb obtained by a transcutaneous spectrophotometry-based technology suggests that the Hb information can be extracted from NIRS signal. It has the advantage of continuity and noninvasiveness of online assessment of hemoglobin concentration, and significantly reduces the need for blood transfusion and costs [14]. Although the accuracy and trending ability of SpHb have been well documented in stable hemodynamic or in slow and of small magnitude hemoglobin changes, it's

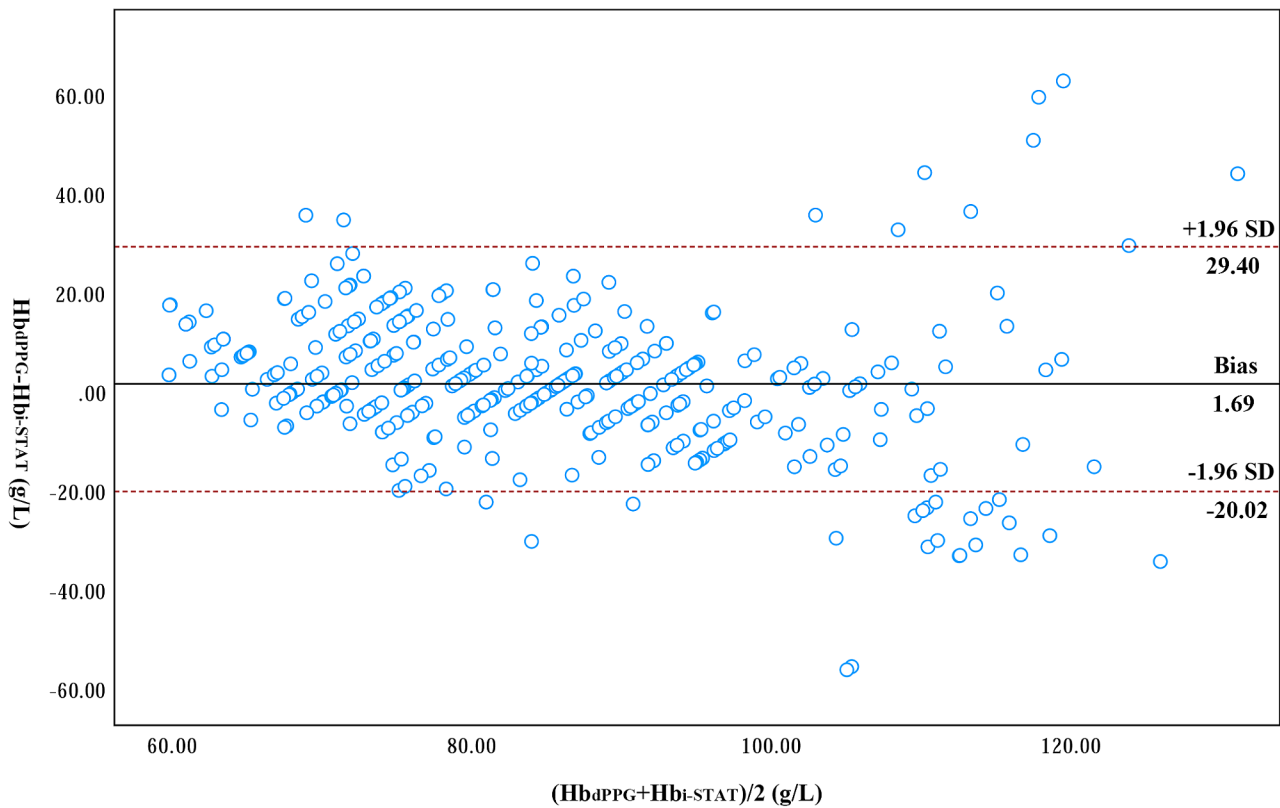
**Table 1** Values of dPPG metrics and hemodynamic parameters during the measurement

Parameters	Mean	SD	Minimum	Maximum
AC <sub>red</sub> (v)	0.19	0.15	0.01	0.75
DC <sub>red</sub> (v)	6.90	5.24	0.27	17.71
AC <sub>red</sub> /DC <sub>red</sub> (%)	3.13	1.35	1.13	6.72
AC <sub>inf</sub> (v)	0.11	0.13	0.01	0.71
DC <sub>inf</sub> (v)	3.13	3.03	0.01	0.83
AC <sub>inf</sub> /DC <sub>inf</sub> (%)	3.73	1.45	0.95	7.07
Hb <sub>i-STAT</sub> (g/L)	83.78	16.55	51	143
CO (L/min)	3.87	1.02	1.84	6.79
SBP (mmHg)	119.68	25.77	68	174
DBP (mmHg)	69.73	20.14	34	119
MAP (mmHg)	95.49	27.14	45	165
HR (bpm)	94.77	19.17	56	159
SpO <sub>2</sub> (%)	99.82	0.47	98	100

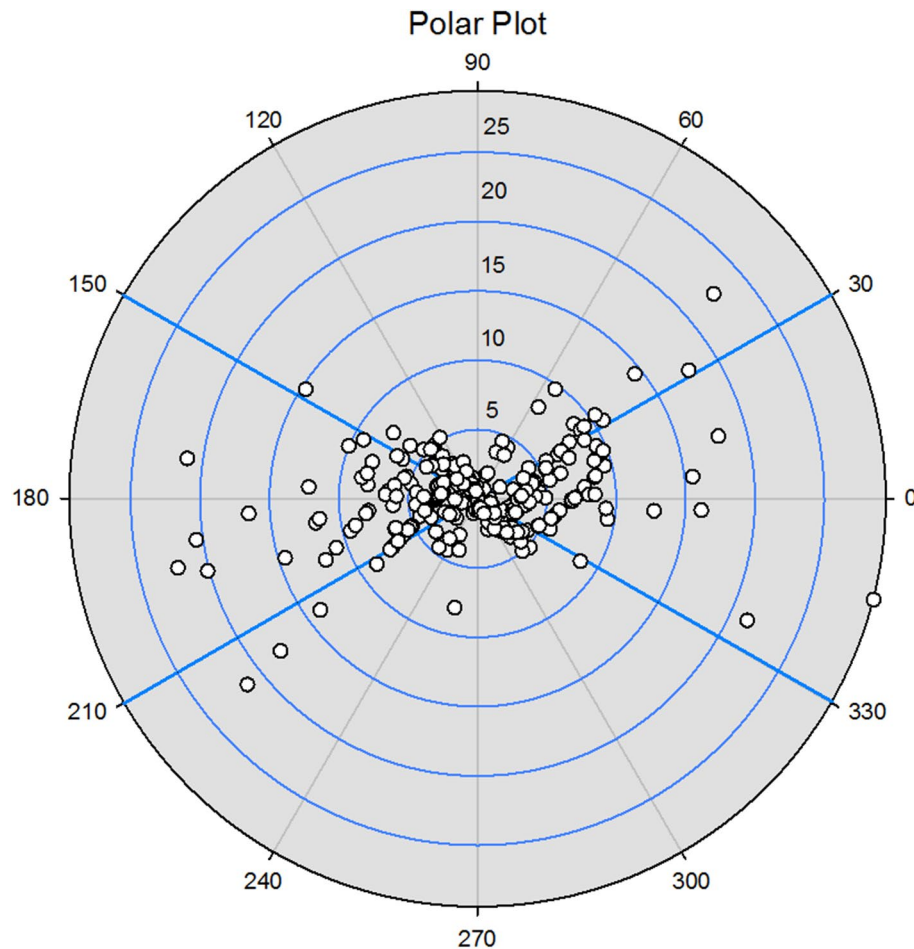
*Abbreviations:* dPPG, descending aortic photoplethysmography; AC<sub>red</sub>, alternating current of red light; DC<sub>red</sub>, direct current of red light; AC<sub>inf</sub>, alternating current of infrared light; DC<sub>inf</sub>, direct current of infrared light; v, voltage; Hb<sub>i-STAT</sub>, hemoglobin measured by i-STAT device; CO, cardiac output; SBP, systolic blood pressure; DBP, diastolic blood pressure; MAP, mean arterial pressure; SpO<sub>2</sub>, pulse oxygen saturation



**Fig. 2** Showed the ROC curves for  $AC_{red}/DC_{red}$  and  $AC_{inf}/DC_{inf}$  in predicting  $Hb < 60$  g/L (A) and  $Hb > 100$  g/L (B). ROC, receiver operating characteristic curve;  $AC_{red}$ , alternating current of red light;  $DC_{red}$ , direct current of red light;  $AC_{inf}$ , alternating current of infrared light;  $Hb$ , hemoglobin concentration



**Fig. 3** Bland-Altman plot showed the bias and limit of agreement between  $Hb$  measured by transesophageal dPPG signal and blood gas analysis dPPG, descending aortic photoplethysmography



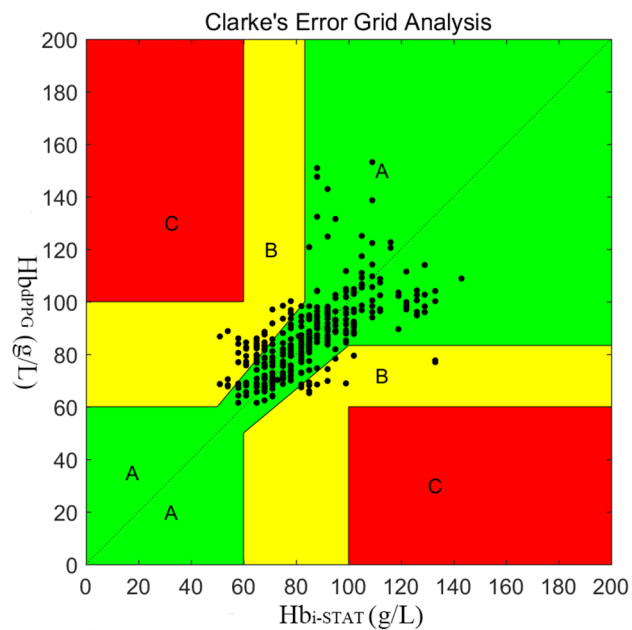
**Fig. 4** Polar plot analysis on trending ability of changes of Hb measured by transesophageal dPPG signal against the blood gas analysis

inaccuracy of Hb assessment in critically ill patients has been described [15–18]. In severely traumatized and surgical bleeding patients, SpHb showed decreased evaluate ability and a high detection failure rate [6]. In acute hemorrhagic patients, SpHb showed significantly lower readings than the laboratory measurement to assess Hb concentration [19, 20]. Park YH et al. reported that the bias between SpHb and laboratory measured Hb increased with poor peripheral perfusion [21, 22]. These results suggest that the limited application of SpHb in critically ill patients may be mainly due to the susceptibility of peripheral spectroscopy signal to impaired tissue perfusion, hypotension, hypothermia, and infusion of vasopressor [1, 5, 23]. This suggests that using a stronger and more stable NIRS signal source to monitor Hb merits investigation. Therefore, in our study, we used central dPPG as an alternative signal source for continuous hemoglobin monitoring.

To our knowledge, this is the first study to use central rather than the peripheral PPG signal for Hb measurement. Our study found that several metrics extracted from the dPPG signal, especially  $AC_{red}/DC_{red}$  and

$AC_{inf}/DC_{inf}$  have significant correlations with  $Hb_{i-STAT}$ , which was consistent with a previous study using finger PPG signal in healthy subjects [24]. ROC analysis showed the ability of  $AC_{red}/DC_{red}$  to reliably predict the Hb “trigger threshold” for transfusion ( $Hb_{i-STAT} < 60$  g/L and  $Hb_{i-STAT} > 100$  g/L) (Fig. 2). These results suggest that it was feasible to extract information about Hb concentration from the dPPG signal.

The bias (precision) of SpHb ranged from  $-0.20$  g/dL ( $-2.0$  g/L) to  $1.63$  g/dL ( $16.3$  g/L) ( $1.0$ – $2.7$  g/dL or  $10.0$ – $27.0$  g/L) in spine surgery, cardiac surgery, and acute gastrointestinal bleeding patients [1]. The bias of  $Hb_{dPPG}$  measurement in our study was similar to that reported in the literature for SpHb assessment in a mixed surgical population [19, 25]. The correlation coefficient ( $r=0.81$ ) between  $Hb_{dPPG}$  and  $Hb_{i-STAT}$  was also consistent with the correlation between SpHb and laboratory Hb measurement in surgical patients [19]. Transesophageal dPPG measures the light absorption of the macrovascular blood flow, the descending aorta, rather than the microvascular net. On the one hand, the central macrovascular dPPG signal carries more information about Hb than



**Fig. 5** Paired Hb values provided by transesophageal dPPG and blood gas analysis plotted using the three zones Hb error grid taking into account the clinical significance of the difference

the peripheral microvascular PPG signal. On the other hand, the signal intensity of central reflection dPPG signal (signal-to-noise ratio: 0.03–0.04) is much greater than peripheral reflection PPG signal (signal-to-noise ratio: 0.001–0.005) [11, 26]. In our study, dPPG signals were still detected even during the periods of low cardiac output or hypotension, whereas the tail SpO<sub>2</sub> waveform was occasionally became disturbed or even disappeared. In some specific pathological circumstances, such as vasoplegia syndrome, peripheral arterial tension is reduced, leading to a significantly reduction in the pulsatile component of the PPG signal, whereas the central descending aorta is less affected. Therefore, the PPG that detected from the central large vessel was more stable than the peripheral PPG signal. The central dPPG technology may avoid erroneous Hb assessment and transfusion decisions in acute hemorrhage, hypothermia, vasopressors administration, and vasoplegia syndrome.

However, there was a generally wide LOA and a large percentage error between Hb<sub>dPPG</sub> and Hb<sub>i-STAT</sub>. And the Hb<sub>dPPG</sub> also showed poor comparability with the Hb<sub>i-STAT</sub> measured of hemoglobin change trends during the process of hemodilution and transfusion. These results may be associate with several factors. First, although the artifacts caused by respiratory motion and esophageal peristalsis hidden in the transesophageal dPPG signal were removed by a filter, the nonpulsatile DC component had contamination of background light absorption caused by surrounding tissues, such as the esophageal mucosa and smooth muscle between the transesophageal oximetry

sensor and the descending aorta [12, 27, 28]. Similar to the principle of cerebral oxygen saturation monitoring, it may be possible to remove background light absorption contamination by setting both near and far photodetectors or adding different wavelengths related to Hb light absorption, but these require further investigation [22, 29, 30]. In addition, the infusion of colloids appears to affect the light absorption of hemoglobin [4]. In our study, colloids and crystalloids were frequently infused during the hemodilution process, making it difficult to evaluate the effect of fluids on Hb<sub>dPPG</sub> measurement. Third, a recent pilot study found that the light absorption of hemoglobin was influenced by high concentrations of oxygen inhalation [31]. In our study, the experimental animals were ventilated with pure oxygen, so we cannot evaluate the influence of FiO<sub>2</sub> on Hb<sub>dPPG</sub> measurement. Finally, the large percentage error of Hb<sub>dPPG</sub> may also be related to the reference equipment for Hb standard values in this study. The measurement of Hb<sub>i-STAT</sub> is not the gold standard and is strongly influenced by the increase in white blood cells, high blood lipids, low total protein, and low hemoglobin [32]. Although Hb<sub>dPPG</sub> has poor trending ability, it is still considered by the authors as a good device for anesthesiologists to continuously detect the trend of Hb concentration change. It could facilitate timely reactions of anesthesiologists to treat potential decrease of Hb. Worthy of note, the transesophageal dPPG monitoring in our study provided 100% continuous signal during the process of hemodilution and transfusion, even though in the presence of low cardiac output and low blood pressure. Therefore, timely establishment of continuous Hb<sub>dPPG</sub> measurements by transesophageal dPPG monitoring could guide transfusion and resuscitation in critical patients. Based on current technology, introducing standard values of Hb for correction or data accumulation is worth exploring to further improve the accuracy and trending ability of Hb<sub>dPPG</sub> measurement.

The error grid allows assessment of inaccuracy of devices according to their impact on patient care [13]. Morey et al. suggested that an ideal device should have 95% of points within the zone A, 5% within the zone B and 0% within the zone C. Although the Hb<sub>dPPG</sub> measurement does not meet the proposed criteria (82/18/0% in our study), no data points correlated with potential therapeutic misadventure according to the 2006 transfusion criteria of American Society of Anesthesiologists [33].

For continuous transesophageal Hb<sub>dPPG</sub> monitoring, safety should be considered. In our study, no esophageal bleeding was observed after removal of the dPPG sensor in any of the experimental animals. In our previous clinical studies, there was no complaint of sore throat, dysphagia or dysarthria in all enrolled patients after insertion of the oximetry sensor into esophagus [11, 12].

In order to reduce the potential damage caused by placing the dPPG sensor into the esophagus, the dPPG sensor could be assembled into a tubule. Thus, it can be easily inserted into the esophagus with minimal invasiveness like placing a stomach tube. However, the safety of the dPPG sensor still needs to be validated in further studies.

This study has several limitations. First, although 376 pairs of valid data were analyzed, the sample size of this study was small. Second, the calculation model of  $Hb_{dPPG}$  has not been validated in a new animal or clinical experiment by online display of  $Hb_{dPPG}$  values. Third, we used  $Hb_{i-STAT}$  as the reference method in this study, which is not the true gold standard of Hb measurement. Fourth, we did not collect peripheral PPG signal to compare with the central dPPG signal, nor did we collect peripheral SpHb assessment to compare with central  $Hb_{dPPG}$ . Fifth, the lowest observed  $Hb_{i-STAT}$  level was 51 g/L and the lowest observed  $Hb_{dPPG}$  level was 61 g/L. Future work should elucidate the ability of transesophageal  $Hb_{dPPG}$  monitoring to detect Hb concentrations over a wide range. Finally, the sensor used in our study was self-made, with the light emitter and photodetector aligned side-by-side. Although we did not observe any unexpected adverse events or effects in our study, some precautionary aspects, such as the safety of the esophageal mucosa and the heart when electrocautery or defibrillation is used, are still unknown. Therefore, it has not yet been tested in patients before developing a sensor specifically for transesophageal  $Hb_{dPPG}$  monitoring.

## Conclusion

In conclusion, this study demonstrated that it is feasible to establish a noninvasive and continuous Hb monitoring by transesophageal descending aortic PPG signal when the oximetry sensor is positioned properly. The  $AC_{red}/DC_{red}$  extracted from the dPPG signal could provide a sensitive prediction of the Hb threshold for transfusion. The Hb concentration measured by dPPG signal has moderate correlation with that measured by blood gas analysis. Transesophageal  $Hb_{dPPG}$  monitoring merits further evaluation and development for high risk of surgical bleeding patients or critically ill patients in intensive care units, or operating rooms.

## Abbreviations

Hb	hemoglobin
dPPG	descending aortic photoplethysmography
NIRS	near-infrared spectroscopy
AC	alternating current
DC	direct current
ROC	receiver operating characteristic
$Hb_{dPPG}$	hemoglobin measured by descending aortic photoplethysmography
$Hb_{i-STAT}$	hemoglobin measured by blood gas analysis
$AC_{red}$	alternating current of 660 nm red light
$DC_{red}$	direct current of 660 nm red light
$AC_{inf}$	alternating current of 940 nm infrared light

$DC_{inf}$	direct current of 940 nm infrared light
SpHb	Pulse CO-Oximeter
PPG	photoplethysmography
$FiO_2$	fraction of inspired oxygen
$EtCO_2$	end-tidal carbon dioxide
PiCCO	continuous cardiac output monitoring
CVP	central venous pressure
APS	acquisition and processing system
$SpO_2$	pulse oxygen saturation
ECG	electrocardiogram
BP	blood pressure
HR	heart rate
SD	standard deviation
CI	confidence interval
LOA	limit of agreement

## Author contributions

LP, BG, and WW have given substantial contributions to the conception or the design of the manuscript, LZ, XZ, YZ, MD, ZL, HJ and YH to acquisition, analysis and interpretation of the data. All authors participated to draft the manuscript, LP and WW revised it critically. All authors read and approved the manuscript.

## Funding

This work was supported by the National Natural Science Foundation of China (Grant no. 81971772).

## Data availability

The datasets used and analysed during this study are available from the corresponding author on reasonable request.

## Declarations

### Ethics approval and consent to participate

The authors are accountable for all aspects of the work in ensuring that questions related to the accuracy or integrity of any of the work are appropriately investigated and resolved. This study was approved by the Animal Ethics Committee of West China Hospital of Sichuan University (No. 2019056 A, Chengdu, China). All methods were carried out in accordance with relevant guidelines and regulations.

### Consent for publication

Not applicable.

### Competing interests

The authors declare no competing interests.

### Author details

<sup>1</sup>Department of Anesthesiology, West China Hospital, Sichuan University, 37 Guo Xue Xiang, Chengdu 610041, China

<sup>2</sup>Department of Cardiovascular Surgery, The Third People's Hospital of Chengdu, 82 Qing Long Xiang, Chengdu 610041, China

<sup>3</sup>Department of Physics, Sichuan University, Chengdu 610064, China

Received: 14 September 2023 / Accepted: 26 January 2024

Published online: 06 February 2024

## References

- Giraud B, Frasca D, Debaene B, Mimoz O. Comparison of haemoglobin measurement methods in the operating theatre. *Br J Anaesth*. 2013;111(6):946–54.
- Applegate li RL, Applegate PM, Cannesson M, Peiris P, Ladlie BL, Torp K. Multicenter comparison of three intraoperative hemoglobin trend monitoring methods. *J Clin Monit Comput*. 2020;34(5):883–92.
- Kim SH, Lilot M, Murphy LS, Sidhu KS, Yu Z, Rinehart J, et al. Accuracy of continuous noninvasive hemoglobin monitoring: a systematic review and meta-analysis. *Anesth Analg*. 2014;119(2):332–46.
- Vos JJ, Kalmar AF, Struys MM, Porte RJ, Wietasch JK, Scheeren TW, et al. Accuracy of non-invasive measurement of haemoglobin concentration by pulse



- co-oximetry during steady-state and dynamic conditions in liver surgery. *Br J Anaesth.* 2012;109(4):522–8.
5. Coquin J, Bertarrex A, Dewitte A, Lefèvre L, Joannes-Boyau O, Fleureau C, et al. Accuracy of determining hemoglobin level using occlusion spectroscopy in patients with severe gastrointestinal bleeding. *Anesthesiology.* 2013;118(3):640–8.
  6. Baulig W, Seifert B, Spahn DR, Theusinger OM. Accuracy of non-invasive continuous total hemoglobin measurement by pulse CO-Oximetry in severe traumatized and surgical bleeding patients. *J Clin Monit Comput.* 2017;31(1):177–85.
  7. Margreiter J, Keller C, Brimacombe J. The feasibility of transesophageal echocardiograph-guided right and left ventricular oximetry in hemodynamically stable patients undergoing coronary artery bypass grafting. *Anesth Analg.* 2002;94(4):794–8.
  8. Kyriacou PA, Powell S, Langford RM, Jones DP. Investigation of oesophageal photoplethysmographic signals and blood oxygen saturation measurements in cardiothoracic surgery patients. *Physiol Meas.* 2002;23(3):533–45.
  9. Wei W, Zhu Z, Liu L, Zuo Y, Gong M, Xue F, et al. A pilot study of continuous transtracheal mixed venous oxygen saturation monitoring. *Anesth Analg.* 2005;101(2):440–3.
  10. Vicenzi MN, Gombotz H, Krenn H, Dorn C, Rehak P. Transesophageal versus surface pulse oximetry in intensive care unit patients. *Crit Care Med.* 2000;28(7):2268–70.
  11. Mou L, Gong Q, Wei W, Gao B. The analysis of transesophageal oxygen saturation photoplethysmography from different signal sources. *J Clin Monit Comput.* 2013;27(3):365–70.
  12. Ling P, Quan G, Siyuan Y, Bo G, Wei W. Can the descending aortic stroke volume be estimated by transesophageal descending aortic photoplethysmography? *J Anesth.* 2017;31(3):337–44.
  13. Morey TE, Gravenstein N, Rice MJ. Let's think clinically instead of mathematically about device accuracy. *Anesth Analg.* 2011;113(1):89–91.
  14. Ribed-Sánchez B, González-Gaya C, Varea-Díaz S, Corbacho-Fabregat C, Pérez-Oteyza J, Belda-Iniesta C. Economic Analysis of the Reduction of Blood Transfusions during Surgical Procedures While Continuous Hemoglobin Monitoring Is Used. *Sensors (Basel).* 2018;27;18(5):1367.
  15. Colquhoun DA, Forkin KT, Durieux ME, Thiele RH. Ability of the Masimo pulse CO-Oximeter to detect changes in hemoglobin. *J Clin Monit Comput.* 2012;26(2):69–73.
  16. Frasca D, Dahyot-Fizelier C, Catherine K, Levrat Q, Debaene B, Mimoso O. Accuracy of a continuous noninvasive hemoglobin monitor in intensive care unit patients. *Crit Care Med.* 2011;39(10):2277–82.
  17. Tang B, Yu X, Xu L, Zhu A, Zhang Y, Huang Y. Continuous noninvasive hemoglobin monitoring estimates timing for detecting anemia better than clinicians: a randomized controlled trial. *BMC Anesthesiol.* 2019;17(1):80.
  18. Butwick A, Hilton G, Carvalho B. Non-invasive haemoglobin measurement in patients undergoing elective caesarean section. *Br J Anaesth.* 2012;108(2):271–7.
  19. Lamhaut L, Apriotesei R, Combes X, Lejay M, Carli P, Vivien B. Comparison of the accuracy of noninvasive hemoglobin monitoring by spectrophotometry (SpHb) and HemoCue® with automated laboratory hemoglobin measurement. *Anesthesiology.* 2011;115(3):548–54.
  20. Applegate RL 2nd, Barr SJ, Collier CE, Rook JL, Mangus DB, Allard MW. Evaluation of pulse cooximetry in patients undergoing abdominal or pelvic surgery. *Anesthesiology.* 2012;116(1):65–72.
  21. Park YH, Lim S, Kang H, Shin HY, Baek CW, Woo YC. Comparison of the accuracy of noninvasive hemoglobin monitoring for preoperative evaluation between adult and pediatric patients: a retrospective study. *J Clin Monit Comput.* 2018;32(5):863–9.
  22. Bergek C, Zdolsek JH, Hahn RG. Non-invasive blood haemoglobin and plethysmographic variability index during brachial plexus block. *Br J Anaesth.* 2015;114(5):812–7.
  23. Coquin J, Dewitte A, Manach YL, Caujolle M, Joannes-Boyau O, Fleureau C, et al. Precision of noninvasive hemoglobin-level measurement by pulse co-oximetry in patients admitted to intensive care units for severe gastrointestinal bleeds. *Crit Care Med.* 2012;40(9):2576–82.
  24. Jeon KJ, Kim SJ, Park KK, Kim JW, Yoon G. Noninvasive total hemoglobin measurement. *J Biomed Opt.* 2002;7(1):45–50.
  25. De Rosa RC, Romano GM, Abbate R, Corcione A, De Robertis E. Accuracy and trending ability of hemoglobin measurement by the pulse CO-Oximeter during vascular surgery. *J Clin Monit Comput.* 2020;34(3):501–8.
  26. König V, Huch R, Huch A. Reflectance pulse oximetry—principles and obstetric application in the Zurich system. *J Clin Monit Comput.* 1998;14(6):403–12.
  27. Sahni R. Noninvasive monitoring by photoplethysmography. *Clin Perinatol.* 2012;39(3):573–83.
  28. Firbank M, Elwell CE, Cooper CE, Delpy DT. Experimental and theoretical comparison of NIR spectroscopy measurements of cerebral hemoglobin changes. *J Appl Physiol (1985).* 1998;85(5):1915–21.
  29. Pellicer A, Bravo Mdel C. Near-infrared spectroscopy: a methodology-focused review. *Semin Fetal Neonatal Med.* 2011;16(1):42–9.
  30. Azarnoosh M, Doostdar H. Assessment of Photoplethysmography Method in extraction of Hemoglobin Concentration. *J Biomed Phys Eng.* 2019;9(6):711–8.
  31. Gayat E, Bodin A, Fischler M. Instability in non-invasive haemoglobin measurement: a possible influence of oxygen administration. *Acta Anaesthesiol Scand.* 2011;55(7):902.
  32. Berkow L. Factors affecting hemoglobin measurement. *J Clin Monit Comput.* 2013;27:499–508.
  33. American Society of Anesthesiologists Task Force on Perioperative Blood Transfusion and Adjuvant Therapies. Practice guidelines for perioperative blood transfusion and adjuvant therapies: an updated report by the American Society of Anesthesiologists Task Force on Perioperative Blood Transfusion and Adjuvant therapies. *Anesthesiology.* 2006;105(1):198–208.

## Publisher's Note

Springer Nature remains neutral with regard to jurisdictional claims in published maps and institutional affiliations.